

# OPTI TD



**The Efficient Thigh Deboner**

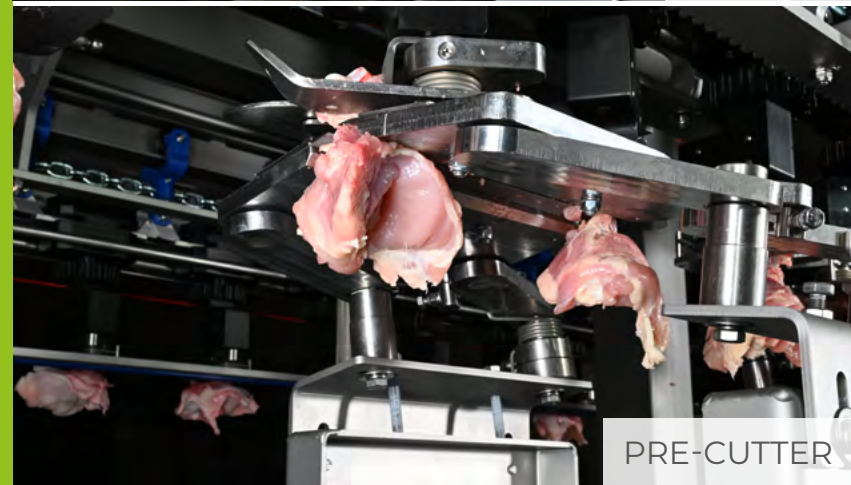
We make it **SIMPLE**  
You make it **PROFITABLE**

# OPTI TD

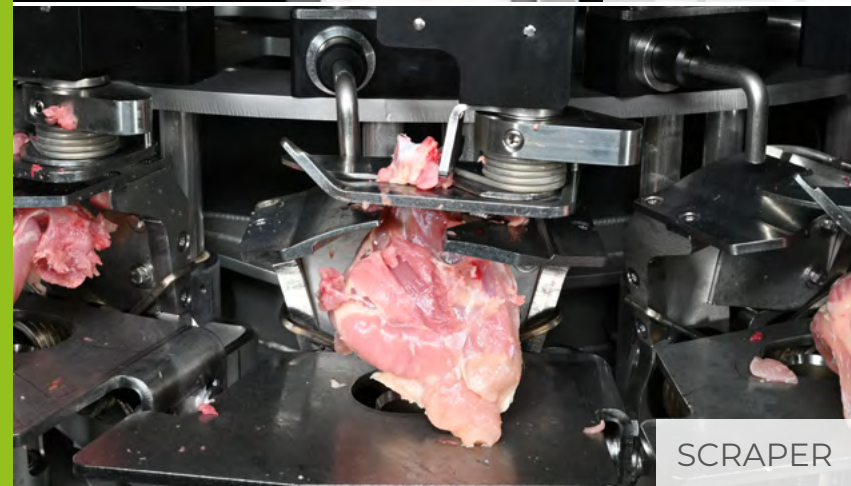
THE EFFICIENT THIGH DEBONER



SKINNER



PRE-CUTTER



SCRAPER



KNEECAP REMOVER

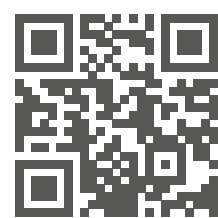


## KEY FEATURES

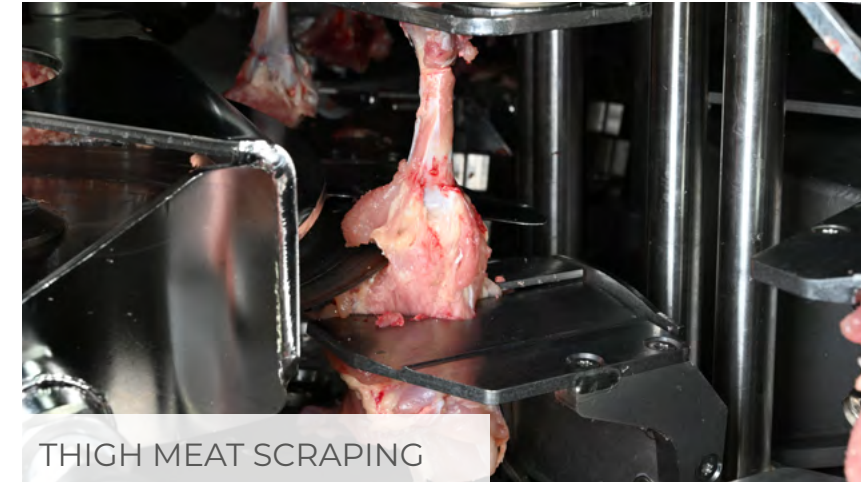
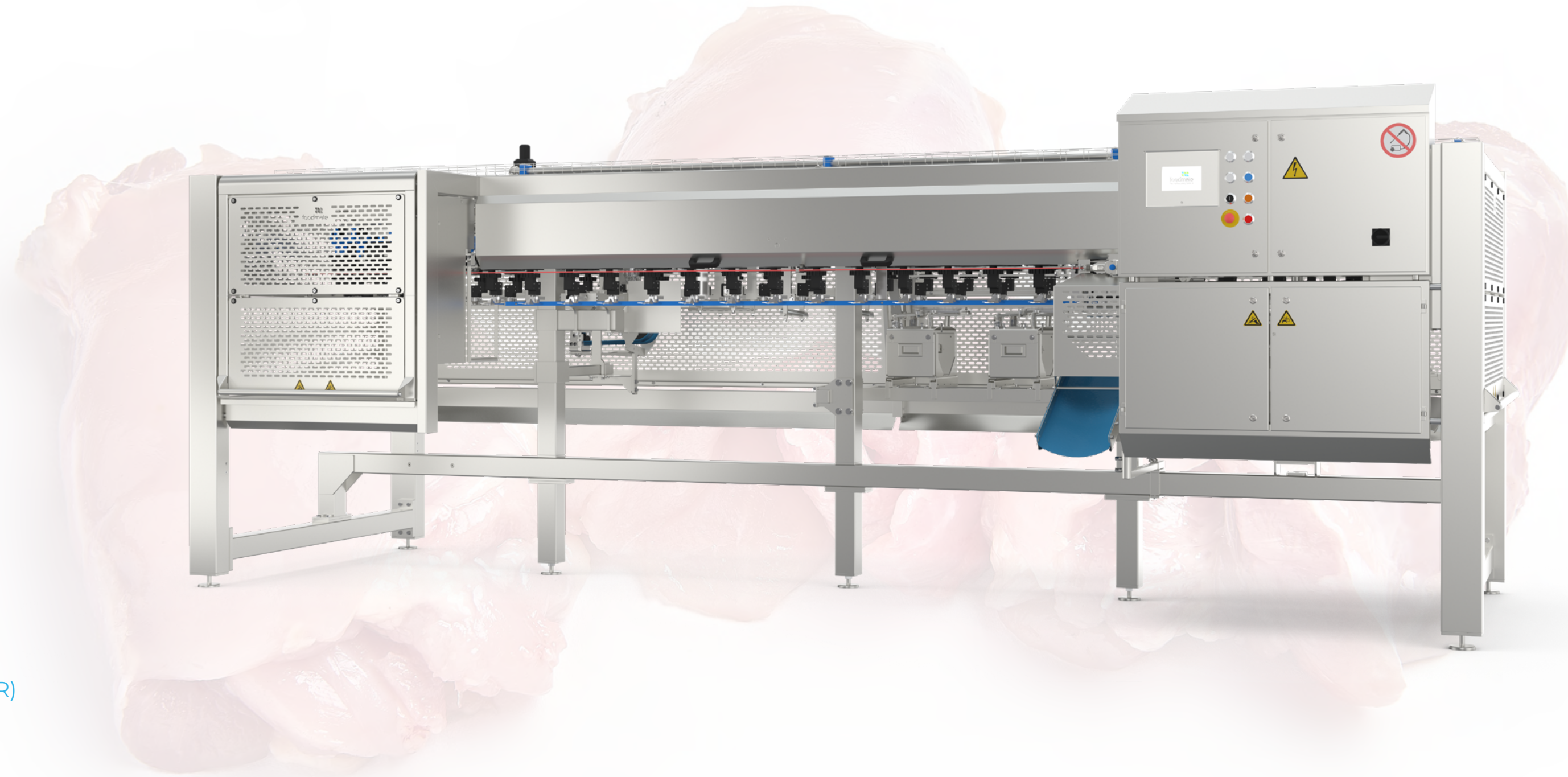
Foodmate developed the Kneecap Remover (KCR) feature for the OPTI Thigh Deboner. This as a solution to address staffing issues with the trimming of cartilage that stays on the meat after deboning.

The OPTI TD's innovative scraper design and tendon cutting system gives the meat a hand-cut appearance without shattering the bones.

## OPTI Thigh Deboner with kneecap remover (KCR)



SEE THE  
**OPTI TD**  
IN ACTION



THIGH MEAT SCRAPING



THIGH MEAT HARVESTING



THIGH MEAT UNLOADING

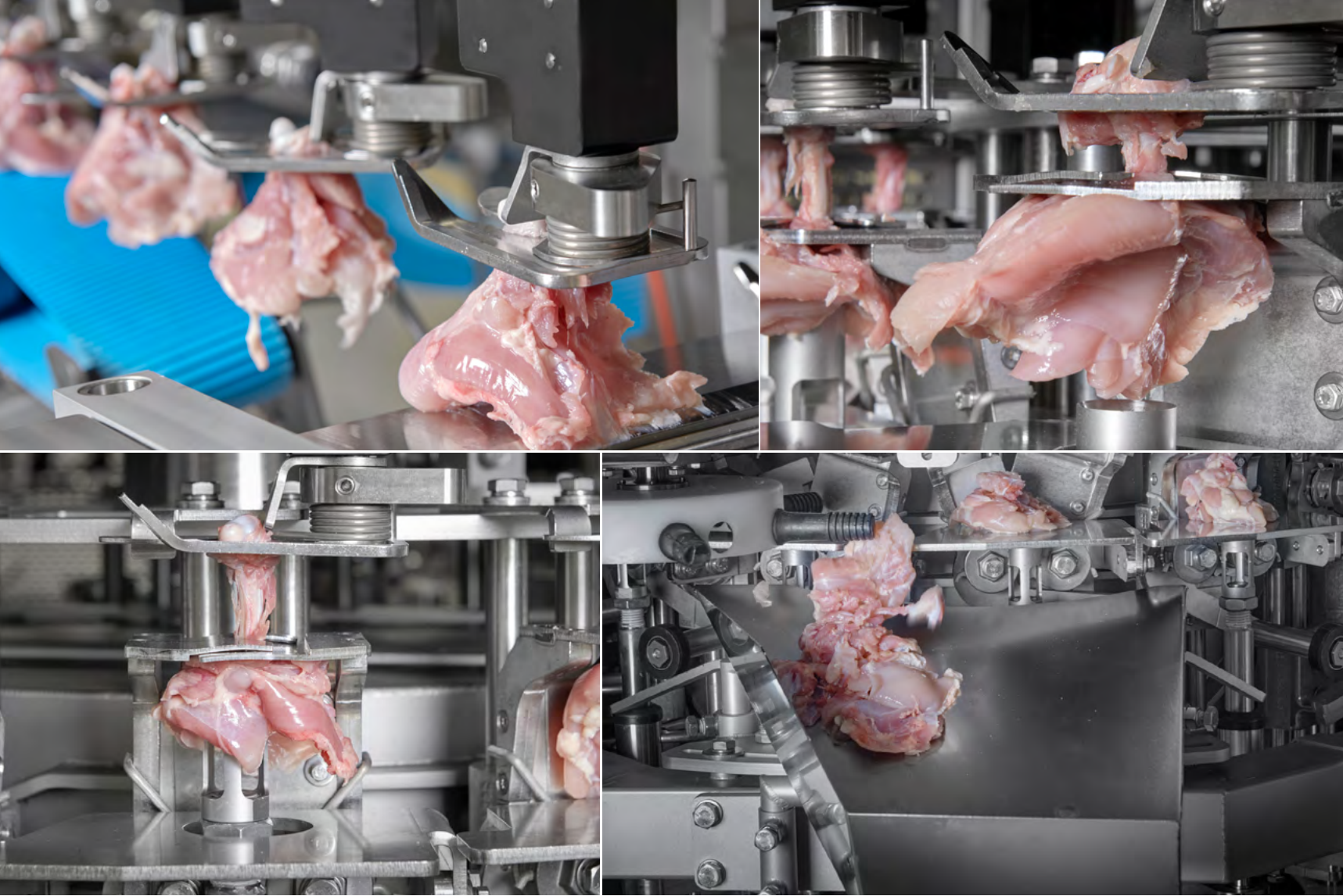
## Leading Technology in Dark Meat Deboning Solutions

### KNEECAP REMOVER (KCR)

The Kneecap Remover is located underneath the meat scrapers. Each meat scraper has a circular blade that comes towards the thigh bone from underneath to cut the tendons around the knee joint.

After the tendons are cut, the meat scraper pulls the meat off the bone, leaving the kneecap attached to the bone.

This module can be installed on existing machines as well.



## ADVANTAGES

- ✓ Excellent yield
- ✓ Optional Kneecap Remover
- ✓ Eliminates bone shattering and fragmenting
- ✓ Provides hand-cut meat appearance
- ✓ Capable of deboning 6000 thighs per hour
- ✓ Reduces operating and maintenance costs



INITIAL PRODUCT



FINAL PRODUCT



BYPRODUCT

### TECHNICAL SPECIFICATIONS

Frame and Motor	Stainless steel
Power Consumption	3,5 kW
Length	5825 mm
Width	1800 mm
Height	2145 mm
Weight	approx. 2400 kg

