



CHICKSORT 4.0 VISION AND GRADING

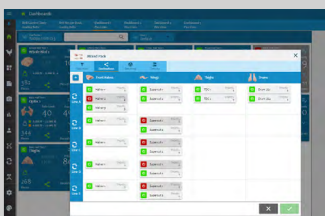
POULTRY VISION & GRADING FOR THE 21ST CENTURY

THE STRENGTH OF FOODMATE PRODUCTION AND DISTRIBUTION CONTROL SOLUTIONS

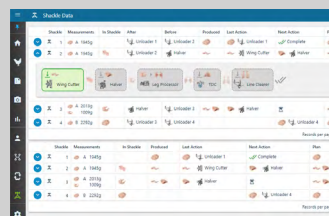
Foodmate production control, grading and distribution systems makes sure industrial processes are carried out efficiently, consistently and with as little deviation as possible. They help maintain throughput, quality, yield and efficiency. Production control, grading and distribution systems measure, monitor and control manufacturing processes and activities. They identify and help users to correct any abnormalities or variations from specified values, either manually or automatically. The aim is to make sure that production is consistent and keep product waste to a minimum.



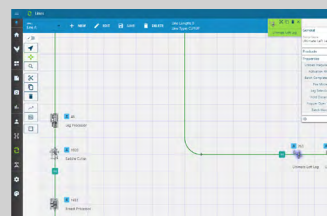
Next generation ChickSort 4.0 builds on the global leading ChickSort family of weighing, grading and distribution controls. Setting a new standard as the most advanced, user-friendly, graphics-based grading and distribution software on the market.



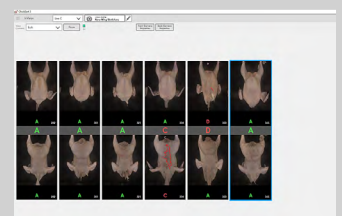
DESTINATIONS – MIXED PACK



SHACKLE DATA



LINE BUILDER



QUALITY GRADING

CHICKSORT 4.0 DASHBOARD

The advanced Dashboard indicates at a glance:

- ✓ Current production
- ✓ Combined piece rate
- ✓ Total piece production
- ✓ Individual line histogram
- ✓ Grade performance graph
- ✓ Total production histogram
- ✓ Automatic weight band widening
- ✓ Average bird weight
- ✓ Whole bird weight spread
- ✓ Individual line speeds
- ✓ Hanging efficiency
- ✓ Reference position
- ✓ Hanging efficiency per line and combined

Building on the experience gained through implementing ChickSort 3.0 solutions worldwide, Foodmate has developed ChickSort 4.0.

This system update is even more intuitive and user-friendly, with a re-designed user interface. ChickSort 4.0 has been developed to control Foodmate weighing, grading and distribution lines and Flex Cut-up with seamless data interfaces to satisfy the needs of poultry processors today and in the future.

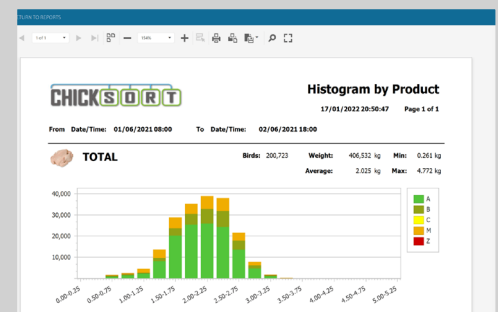
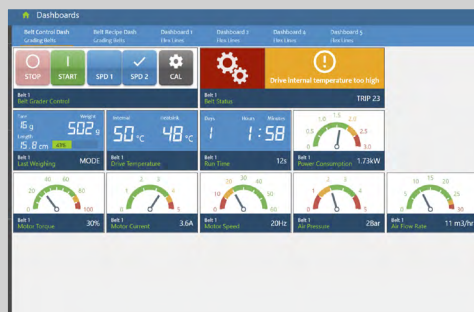
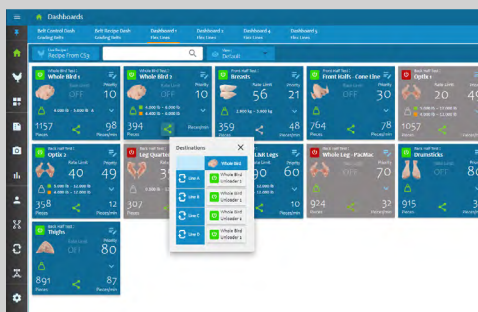
Processing plants can rely on the ChickSort continuous replanning algorithms to ensure that the best decision is made for every bird, keeping production consistent and minimizing product waste.

ChickSort 4.0 can connect to the Foodmate Data Portal and Data Dashboard, giving complete visibility of the entire Cut-up and deboning process.

CHICKSORT 4.0

INVISION DETECTION PARAMETERS:

- ✓ Skin flaws/barking
- ✓ Single leg hang
- ✓ Physical size
- ✓ Broken wings
- ✓ Missing parts
- ✓ Hock length
- ✓ Hock burn
- ✓ Bile stain
- ✓ Bruises
- ✓ Feathers
- ✓ Organs
- ✓ Missing shackle detection



We make it SIMPLE.
You make it PROFITABLE.




foodmate
A DURAVANT COMPANY

www.foodmate.nl // info@foodmate.nl

The Netherlands (HQ) - USA - UK - Poland - China - Brazil